

ANNOUNCEMENTS

Got a judge recommendation? Contact Dee or Jan!

Need a SAM blazer? Blazers should be ordered from:

Academy Award Clothes
Los Angeles, CA
213 622 9125

Tell them you're with Sammamish and they will know the correct color, etc. Please order and pay, then when you receive the blazer and it fits correctly, submit the receipt to the Treasurer for reimbursement. The blazers belong to the club and if you should leave, your blazer should be returned to the Club president.



2005 SKC Officers

President: Dee Carlson
avalonp1@gte.net
Vice President/Programs:
Rusty Kingery
irusty@email.msn.com
Secretary:
Deb Lewy, *deb.lewy@comcast.net*
Treasurer: Patty Hull
pattyhull@aol.com

Board Members
Pat Wilaby
pawmarc@earthlink.net
Jan Leikam
waynejan1@verizon.net
Reggie Gausman
reggiegausman@mindspring.com
Muriel Clifford
mad4jaz@juno.com
Bo Gloster— Board/AKC Delegate
bofloster@aol.com

Sunshine/Social
Jan Leikam
waynejan1@verizon.net
Newsletter Editor
Deb Lewy
deb.lewy@comcast.net

FIND OUT MORE ABOUT SAMMAMISH KENNEL CLUB:

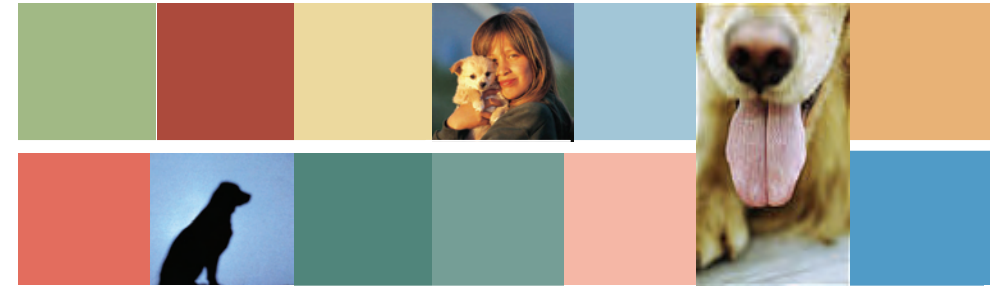
EMAIL DEB.LEWY@COMCAST.NET

WWW.SAMMAMISHKENNELCLUB.ORG

©2005 Sammamish Kennel Club. All rights reserved. The Barker is published approximately nine times a year.



Sammamish Kennel Club
PMB 214
16149 Redmond Way
Redmond, WA 98052



Sammamish Kennel Club
Newsletter

The Barker

President's Message

Next 3 Months

December 4
SAM Annual Meeting and
Holiday Party—2:00 PM
Bo and Doug's House

Bring a present under
\$20.00 for the exchange!

January—no meeting

January 13 —Judges'
Dinner, Best Western,
Puyallup, 6 p.m.

January 15—Puyallup
Show

February 8 — SAM Meet-
ing 7:30 p.m. Station 27

The Premium List is in the mail for our 14 January 2006 show and Rusty is still hunting high and low for ring stewards for the breed rings. If you are interested in stewarding in the breed rings and have not already contacted Rusty, please do so as soon as possible. If you would rather steward for Obedience or Rally and have not contacted me, please do so and I will gladly add you to my list. If you are planning on attending the Judge's Welcome Dinner at the Best Western in Puyallup, Saturday evening, 13 January, please RSVP to Muriel Clifford. Muriel has worked very hard to organize this dinner and it is always enjoyable to relax with our judges over dinner the evening before our show. The dinner is free to all club members, unless you make a reservation and do not attend. It is well worth the drive to Puyallup on a Friday evening from the eastside. If you would like to volunteer to help with the show, please contact Pat Wilaby, or Jan, as there is always enough work for everybody that shows up!

The breed rings are in a new building this year and a lot of work has gone into laying out the rings and figuring out where to put the vendors. Looks like the vendors will be around the outside walls of the building in which the breed rings will be located. Obedience and Rally will still be in the Pavilion, but on the first floor rather than the second floor. The Judge's and ring stewards lunch will be served on the second floor of the Pavilion, as usual. We should have a copy of the floor plan available at the Holiday party.

I hope that every one has a very nice Thanksgiving and that you are looking forward to wonderful holidays. Our Holiday party, and election of club officers for 2005, will be held at Doug and Bo's home on December 4th. If you would like to participate in the gift exchange, please bring a dog-related gift valued at not more than \$20.00. Half the fun in attending this party is in watching Bo steal presents. See you there!

Respectfully,
Dee Carlson, President — Sammamish Kennel Club



NOVEMBER
2005

General Meeting Minutes

Sammamish Kennel Club
October 12, 2005

Attending: Dee Carlson, Rusty Kingery, Patty Hull, Bo Gloster, Reggie Gausmann, Muriel Clifford, Jan Leikam, Beverly Little

Meeting called to order at 7:45PM

There were no minutes of the last meeting.

President's report Discussion of signage offer from Cooper, Cady for January Cluster shows. Notified them that we can't speak for the Cluster, but will happily use this at our August show next year.

No Secretary's report

Treasurer's report: Accepted as submitted.

Report of the Nominating Committee:

President
Dee Carlson
Vice-President
Rusty Kingery
Secretary
Reggie Gausman
Treasurer
Jan Leikam
AKC Delegate
Bo Gloster
Board:
Bo Gloster
Patty Hull
Pat Wilaby
Muriel Clifford
Deb Lewy

Deb Lewy will continue to publish the Barker

Discussion of the pending AKC 'Strategic Plans'; no real information available.

Judges Selection Committee for August 2007: Bo Gloster, Chair; Vandra Huber; Verlynn Johns

Meeting adjourned at 9:10PM

Respectfully submitted:
Jan Leikam



PICTURES FROM THE HULL PUMPKIN PATCH!



Making Lives Better

SUMMIT ASSISTANCE DOGS

Rick Morelan works at Microsoft. He doesn't own a dog. Yet every Saturday, he drives 150 miles round trip to Anacortes to help train service dogs at Summit Assistance Dogs. Sometimes he walks the dogs in the community. Other times, he helps socialize the puppies. How much does he get for his efforts? Nothing. He is a volunteer.

Summit Assistance Dogs currently trains dogs for people with mobility and hearing disabilities, and therapy dogs for medically fragile children or for use in schools or other institutions where a dog can provide therapeutic intervention. Summit dogs are obtained from its own breeding program, other breeders, and from people needing to re-home a pet. They also obtain

many dogs from shelters and breed rescue groups, thereby giving these deserving animals a "new leash on life". Prospective candidates undergo extensive evaluation before being accepted into the program to ensure that only healthy dogs with suitable temperaments are placed. Although Summit will use suitable dogs of various breeds, the most commonly used are Labrador and Golden retrievers and crosses between the two breeds.

Service Dogs
Service dogs provide assistance to people with mobility disabilities by performing such tasks as retrieving items, turning on/off lights, opening doors, pulling wheelchairs, etc. Dogs may be custom trained to meet a variety of specific needs.

Hearing Dogs
Hearing dogs provide assistance to people with hearing disabilities by alerting to sounds such as doorbells, phones, alarms, etc. Dogs are trained to lead their partners to the source of the sound and can be custom trained to meet specific needs.

Therapy Dogs
Therapy dogs provide social interaction and therapeutic intervention in conjunction with a healthcare professional or caregiver to assist people with any number of disabilities. They are frequently used in institutional settings such as schools, hospitals or by social workers/psychologists to aid in counseling. Therapy dogs may also be placed with young medically-fragile children who are not mature enough to fully manage a service dog.

Special Education
Summit also enriches the lives of at-risk youth by involving them, through special educational programs, in the training of our dogs. Dogs attend a local middle school where students take an active part in teaching both basic and advanced skills. This innovative program teaches students many life skills, while engaging them in valuable community service.

To learn more about Summit Assistance Dogs or to donate to this cause, go to www.summitdogs.org or call (360) 293-5609.



SUMMIT SUCCESSES

Chris Blanchard of Seattle, Washington, graduated in November 2004 with Bennet, a Golden Retriever service dog. Chris works at Chihuly Glass, Inc. in Seattle and Ben accompanies him to work each day. Chris uses a wheelchair and Ben helps him retrieve items, turn on and off lights, open and close doors, and other numerous tasks. Breeder: Keith & Lola Ingersoll of Angel Eyes Kennel, Honedale, Idaho. Puppy Raiser: Debbie Craig, Bellingham, Washington



Jenna Clark of Bainbridge Island, Washington, graduated in November 2004 with Crystal, a Golden Retriever service dog. Jenna uses a wheelchair and is co-teacher for disability awareness at the local elementary schools. Crystal accompanies Jenna on her "rounds," helping to educate the children. She also helps Jenna with various tasks such as picking up dropped items and getting the phone in case of emergency. Breeder: Dr. Peter Brown, Sedro Woolley, Washington. Puppy Raiser: Christy Durham, Sedro Woolley, Washington.